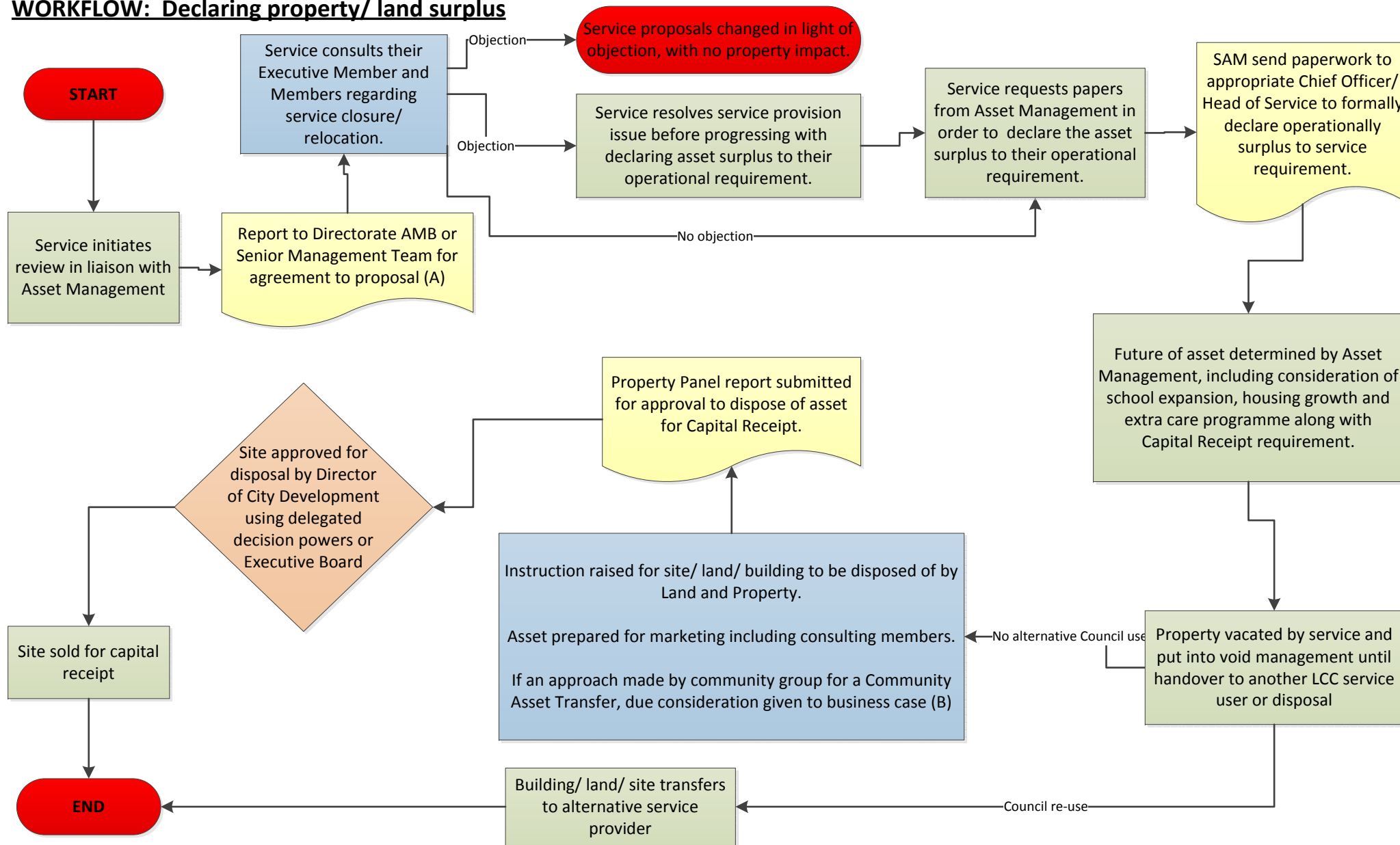


**WORKFLOW: Declaring property/ land surplus**



**NOTES**

A) Adults and Health and Children and Families have Service Asset Management Boards, other services have Management Teams or Programme Boards which take these decisions.

B) CAT's can take months/ years to progress, in some cases assets suffer severe deterioration through vandalism and CAT abandoned, resulting in waste of officer hours negotiating the transfer and ultimately a reduced capital receipt for the Council.